



**Wincle Church of England**

**(Aided) Primary School**

**Prospectus 2010**

Dear Parents,

The purpose of this booklet is to provide a general introduction to Wincle School and its day to day running.

May we welcome you to our school and emphasise that parents are encouraged to contact us if you have any concerns about your child, or your child's progress. We want your child to enjoy his/her time learning with us in Wincle School.

If you are a prospective parent, considering sending your child to this school, you are very welcome to come and look round at any time.

Please contact the school secretary to make an appointment.

Yours sincerely,

Mrs. P. Worswick  
Headteacher

## **WINCLE C.E. (Aided) PRIMARY SCHOOL**

### **PROSPECTUS**

Wincle Church of England Primary School

Wincle

Near Macclesfield

Cheshire

SK11 0QH

Telephone: 01260 227252

Fax: 01260 227308

email: [head@wincle.cheshire.sch.uk](mailto:head@wincle.cheshire.sch.uk)

Website: [www.wincleschool.org](http://www.wincleschool.org)

Mrs. P. Worswick  
Head Teacher

Mr I. Burns  
Chairman of Governors

### **INTRODUCTION**

Wincle School was founded in 1861 on the deed of gift of £500 from Mrs J R Daintry of North Rode, which enabled the building of a spacious school room and school house, which still forms the major part of Wincle School premises today. In the sixties the original building was extended to provide an additional classroom, cloakroom facilities, kitchen and offices. Major renovation of the school house took place in 1999, enabling the creation of separate Infant and Junior classrooms, a hall/dining area, additional office space and a medical area. An outdoor adventure play area was constructed in 2004 to further enhance our facilities. Two years ago a reception play area was built to give the very youngest children access to the outdoors throughout the school day. In 2008 the new building was completed which gave us a new KS1/FS classroom, storeroom, a new disabled toilet and a new KS2 classroom.

With the closure of Wildboarclough and Macclesfield Forest schools some years ago, Wincle became the sole educational facility for children in this widespread, rural area of South Cheshire and now caters for the needs of pupils in the 4 to 11 age range.

We are pleased that you are considering Wincle School for your child's education and trust that you will find the information in this prospectus helpful.

### **WINCLE SCHOOL AIMS**

- To enable every child to be safe and adopt safe practices, to practise healthy lifestyles, to enjoy and achieve and develop spiritually, morally, socially, and culturally, and to make a positive contribution to the School and the community, and to become prepared for future economic wellbeing.
- To promote full inclusion and equal opportunities for everyone in the community.
- To help each child to develop tolerance and respect for others, regardless of race, belief, culture, gender, ability or physical capability and to become aware of and celebrate in the diversity and uniqueness of every individual.
- To value each child for his or her uniqueness and, in valuing each child's contribution, to enable him or her to grow in self esteem and confidence.
- To help each child develop a strong sense of right and wrong, take responsibility for self discipline and his or her actions towards others
- To ensure that each child comes to school free of the fear of physical or emotional harm, bullying or racial discrimination
- To develop lively enquiring young minds; to promote the confidence and skills to question and discuss rationally; and to encourage each child to assume greater independence in his or her own learning
- To enable each child to acquire the necessary knowledge, skills and understanding to achieve his or her full potential across a range of intelligences and aptitudes in all areas of the curriculum, and to appreciate and celebrate his or her own aspirations and achievements and those of others.
- To help each child develop a nurturing and caring attitude towards his or her own physical and emotional well being and to that of everyone else in the community.
- To work in true partnership with parents and carers and to support them in their responsibilities as primary educators of their children.
- To build on our very high expectations for success.

### **How Wincle School Hopes to Fulfil these Aims**

- By working together to ensure that every child feels safe, engages in a healthy life style, enjoys and achieves in all aspects of their development as a whole person, makes a positive contribution to the life of the School and community and develops economic awareness.
- By including everyone in the School community in all aspects of School and Church life.

- By providing a positive Christian influence in the community of which we all form a part, demonstrating clear and consistent guidelines and role modelling of expectations.
- By providing a caring, well planned, welcoming and stimulating environment where everyone feels safe and secure and children can develop fully as individuals.
- By modelling and encouraging care and respect for our School environment.
- By working together to provide and share a wide range of quality first hand appropriate learning experiences that stimulate the interest and recognise the differing needs and rates of development of each child.
- By providing each child with opportunities to apply the skills and concepts he or she has learnt to practical and problem solving situations.
- By monitoring for continuity and progression of learning, through a programme of assessment for learning that informs the planning of a range of future learning experiences and outcomes commensurate to each child's potential achievements.
- By ensuring a broad and balanced curriculum is accessed and that no areas of learning are marginalised.
- By strengthening two-way collaboration with other schools e.g. our Bosley and Wincle Schools' Partnership, our 'Small Schools, Big Ideas' network of neighbouring small schools and our feeder secondary schools.
- By welcoming the support and involvement of parents and governors, recognising that education is a shared venture and that we each have our part to play.
- By having lots of fun!

## **SAFEGUARDING**

Wincle school will support its pupils through:

- (a) The curriculum, to encourage self-esteem and self motivation.
- (b) The school ethos, which promotes a positive, supportive and secure environment and which gives pupils a sense of being valued.
- (c) The implementation of the school behaviour management policy.  
A consistent approach which recognises and separates the cause of behaviour from that which the child displays is vital to ensure that all children are supported within the school setting.

- (d) Regular liaison with other professionals who support the pupils and their families.
- (e) The development and support of responsive and knowledgeable staff, trained to respond appropriately in safeguarding issues.

## **TEACHING ORGANISATION**

Children enter school at the beginning of the school year in which they will become five and transfer to Secondary School at eleven. We maintain close links with secondary schools in Macclesfield and Congleton.

We have two classes in school:

Key Stage 1 (Infants) – Reception, Year 1 and Year 2  
 Key Stage 2 (Juniors) - Years 3 and 4, Years 5 and 6

There are currently 48 children on roll.

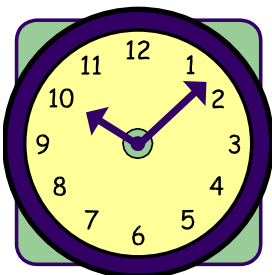
The school prides itself on retaining the virtues of a small rural primary school, where a "family" atmosphere prevails within a structured and disciplined environment. The pupil/adult ratio, currently about 1: 12 - enables a level of personal care which is the envy of many state and independent schools.

Our commitment to individualised learning within small classes will continue and parents can be assured that a happy and supportive environment will be maintained at Wincle School.

The school was last inspected in September 2006. Copies of the inspection report are available from the school office and on the school website. The school was judged to be outstanding in all aspects except attendance which was satisfactory.

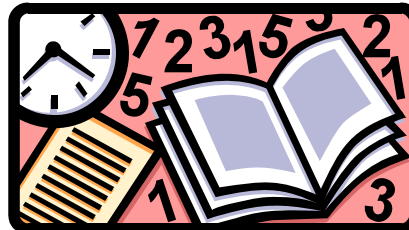
In 2005 Wincle School achieved the Healthy Schools award.

## **THE SCHOOL DAY**



- School begins at 8.55 a.m. and ends at 3.20 p.m.
- Morning break is between 10:10 and 10:25 a.m.
- Lunch is taken between 12:10 and 1:10 p.m.  
     Infants 12:00 and 1.00 p.m.
- Afternoon break is between 2:40 p.m. and 2:50 p.m. – Infants only

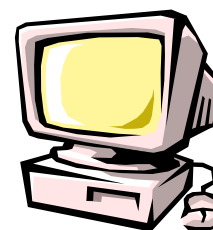
- 23.5 hours approximately are spent on teaching during a normal school week, including religious education, but excluding collective worship, registration and breaks.



- Children are expected to arrive in school by 8.55 a.m. A member of staff will be on the playground from 8:45 a.m. but parents are legally responsible for their children before this time.
- A school bus is available for children who meet the County Transport Co-ordinators criteria. Please ask for details.
- A child's absence should be reported to school either by note, telephone call, email or personal message. Please ring the school office by 9.30 a.m. on the first day of absence.
- The school newsletter is sent out every other week. We try not to send letters out at other times, but sometimes this is unavoidable.

### **THE CURRICULUM:**

Wincle prides itself on the breadth and depth of its curriculum. All subjects in the national curriculum are taught as a basic entitlement and religious education has a prominent role, as befits our status as a Church of England Aided school.



Our principle aim as a school is to create a happy, secure and stimulating environment in which all children develop confidence, care and respect for others and achieve their full potential in all areas.

Emphasis is placed on the growth of personal confidence, care and consideration for others, and the development of good habits of courtesy and self-discipline.

### **LITERACY**

The National Literacy Strategy forms the backbone of children's work in English, uniting the skills of reading and writing, with speaking and listening. It is also relevant to our teaching across the whole of the national curriculum.

We regard reading as one of the most important skills to be achieved and have adopted a wide range of reading materials. Parental involvement in shared reading is positively encouraged.



Children are taught how to write for a variety of purposes and audiences and learning about the structure and spelling of the English language is an integral part of this process. Emphasis is placed on fluent and clear speaking in a manner appropriate for different occasions.

### **MATHEMATICS (or Numeracy)**

In mathematics we believe that the understanding of abstract concepts will grow as teaching is related to the child's



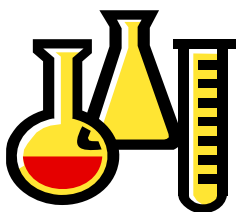
experience of real objects and to practical involvement.

Teaching revolves round the primary framework which underlines the importance of understanding the number system and the ability of children to calculate accurately and efficiently both mentally and, as they move up the school, using and applying written methods.

As with Literacy the focus is on direct teaching complimented by smaller group or individual activities and supported by relevant homework tasks

### **SCIENCE AND TECHNOLOGY**

Our aim is to develop enquiring minds, develop practical abilities and foster a scientific approach to problem solving. Children are taught such skills as observation, prediction and evaluation in the process of scientific investigation.



The school is very well equipped for information and communication technology with PC's wireless laptops and interactive whiteboards/projectors in all 3 classrooms.



Children use the internet regularly to find information and communicate with other schools and organisations. Skills in Design Technology are usually taught through small projects or cross curricular work.

### **HISTORY AND GEOGRAPHY**

These subjects are taught initially through a series of selected themes based on the local environment and spreading out into studies of the past and of the wider world. Other subjects such as art and English are often integrated and educational visits are a feature of this work.



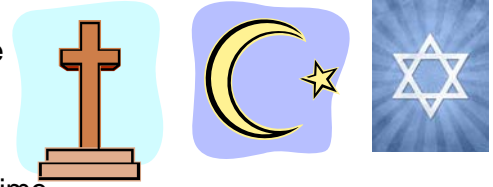
We maintain close links with the Peak Park Ranger Service.

### **RELIGIOUS EDUCATION & WORSHIP**

This is taught in accordance with the syllabus agreed by the Diocesan Board of Education.

Our aim is for children to understand the nature of religion, the practice and beliefs of the Church of England and to develop an awareness and appreciation of other religions.

The governors have agreed for Judaism and Islam to be the two world religions taught to account for one third of the teaching content.



Christianity is taught for the remaining two thirds of the time.

Parents do have the right to withdraw children from religious education and collective worship. Parents wishing to exercise this option should discuss it with the headteacher.

Collective worship is a daily act in school and is led by different staff members, the vicar, children and other visitors.

### **MUSIC AND ART**

Children have regular opportunities to listen to music, make their own music, sing and play instruments. Piano and Violin lessons are available in school.

Artistic skills are developed through experience of drawing, painting, clay, textiles and printing. A specialist art teacher (Mrs Langstaff) teaches art to all KS2 children in the school.



### **PHYSICAL EDUCATION**



A balanced programme of gymnastics, games, dance and swimming is taught. We wish to promote a healthy, active lifestyle and encourage a sense of fair play, sportsmanship and participation. There are various after school clubs. Parents are sometimes asked to make a contribution towards coaching fees. The school is part of the Macclesfield School Sport Partnership and Small Schools cluster.

### **SEX EDUCATION**

It is the school policy that sex education should not be taught as a separate subject, but should be incorporated into health education and PSHE studies. Any questions raised by children in the normal course of their education are dealt with in a sensitive and honest manner.

Please ask if you would like a copy of the Sex Education Policy

## **SPECIAL NEEDS**

Winkle School provides carefully structured work for children experiencing difficulties, as well as offering challenges to those with specific abilities. Children are regularly assessed to monitor their progress and parents are encouraged to discuss their child's achievements on a regular basis.

If your child has special educational needs we will discuss with you the provision to be made. If your child needs an individual education plan or an individual behaviour plan you will be informed and involved in the discussions. The school will draw on the advice of external support services such as the educational psychologist, school nurse, speech therapists, etc.

The school's latest special educational needs policy was successfully implemented last year and has just been updated. Please ask if you would like a copy.

## **PARENTAL INVOLVEMENT**

We welcome parental involvement and encourage parents to come into the school for good work assemblies, to accompany children on visits and outings, and to help with curriculum activities.

## **HOMEWORK**

We believe that education and social development should be broad and balanced. To that end we expect children to give of their best in school and we encourage them to take an interest in other activities after school. The importance of homework is recognised in promoting achievement and it is set in increasing amounts according to age. It is expected that homework will be completed conscientiously and on time and parents are requested to monitor children in the completion of homework tasks.



We also recognise the invaluable role that parents have in teaching reading; listening to your child read and talking about books provides much needed encouragement and practice.



Book bags are very useful for keeping work and books clean and tidy and may be bought from the school. Please ask Mrs Bacon. Copies of the homework policy are available on request.

## **COMPLAINTS PROCEDURE**

The Education Reform Act 1988 requires that arrangements be established for the consideration of complaints. Issues causing concern should be discussed with the head teacher in the first instance. Should it not be possible to resolve matters, further

action will be required by the governing body, and if necessary, the local education authority. Copies of the complaints procedure are available from the school office.

### **PARKING**

Parents are requested not to park outside the school gates at the beginning/end of the school day. Please use the lay by for parking and monitor your children carefully walking to and from the car.

### **ADMISSIONS**

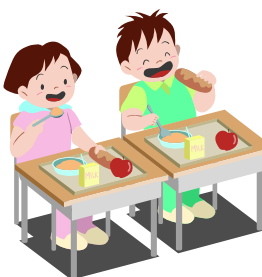
Each year we admit up to 7 children into the reception class. For information on admissions please speak to the headteacher or see the LEA website.

### **GENERAL INFORMATION**

Once a place for your child has been confirmed, details of pre-school visits will be agreed, providing an opportunity for you and your child to meet staff, get to know school procedures and make friends.

### **SCHOOL MEALS**

Excellent meals are cooked on the premises and there is also provision for children to eat a packed lunch (**“Wincle School has the best school meals I have EVER eaten” School primary adviser - March 2006**). Payment for school meals should be made in cash, or by a cheque made payable to "Cheshire East Council".



The cook and older junior children take care of children at lunchtime.

### **MEDICAL**

In the case of illness it is essential that we have an up-to-date emergency contact telephone number. Changes of address and telephone number must be notified to us please.



Occasionally we are asked to administer prescribed medicine to children who are free from infection and fit to return to school. In these circumstances medicine should be brought to school, clearly marked, and agreement made with the class teacher for its administration.

Written details of dosage and timing must be provided.

In the event of minor accidents, the school staff will give first aid, and parents will be informed when children are collected. In the event of more serious injury, the head teacher will contact parents immediately and medical advice and support will be sought.

Wincle School has implemented a 'No Smoking' policy in all areas of the school and its grounds.

You should encourage your child to wear a sunhat, sunglasses and apply suncream to your child before school in hot weather, and encourage them to drink lots of water by bringing a water bottle to school each day.

### **OUT OF SCHOOL ACTIVITIES**

Much of the teaching and learning in school is experience based. We make good use of the local environment, but frequently make visits further afield. In these cases contributions are requested and we are dependent upon your willingness to pay so that visits can take place.



Junior children have swimming lessons in the Spring Term and a contribution towards the cost is requested for this activity. Contributions are also requested for residential visits, and for some after school activities.

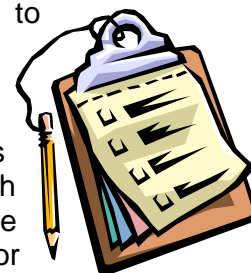


Local Authority Guidelines on arrangements for educational visits are increasingly strict. For most visits where children may come into contact with animals, are near water or are in any way off the beaten track, governor and LA approval has to be sought and risk assessments made. The headteacher is the educational visits co-ordinator. Please speak to her if you have any concerns.

### **NATIONAL TESTS IN YEAR 2 AND YEAR 6**

Under the 1988 Education Act it is the Governors policy not to publish detailed results because of the likelihood of identifying individual children.

Children's educational progress is assessed on a regular basis and tests in writing, reading and mathematics are given in each year of the juniors. These assessments and teacher evidence are used to prepare curriculum targets for individual children and for the school as a whole.



Baseline assessments are conducted with new entrants to reception and targets for children's progress are set and reviewed annually.

### **UNIFORM**

Parents are asked to co-operate in maintaining a smart standard of dress for their children. The recommended style is:

#### **BOYS**

Grey trousers (no 'combat' pockets please), white/light blue polo shirt and Wincle School sweatshirt or v-necked jumper. Alternatively, white collared shirt, Wincle School knitted jumper and school tie. Black shoes (not trainers please).



## **GIRLS**

Grey skirt or pinafore dress, white/light blue polo shirt and Wincle School sweatshirt or v-necked jumper. Alternatively, white collared shirt, Wincle School knitted jumper and school tie. Black shoes (not trainers please). An optional blue gingham dress may be worn in summer. If girls choose to wear trousers they should be grey and straight-legged (not bootcut or tapered) – similar to the boy's trousers.

- Children are not allowed to wear jewellery apart from a watch.
- Children should have P.E. kit in school at all times – every day of term.
- Long hair should be tied back. Hair should not be shaved, dyed or streaked.

School uniform may be ordered through Mrs Bacon in the school office. A small stock is kept in school.

## **P.E. KIT**

All children are expected to take part in PE lessons, unless excused on medical grounds, and should change appropriately.



PE Kit should be kept **in a draw string bag** in the cloakroom. All clothing should be clearly named.

Children need:-

Black/Navy plain shorts

White T-shirt (no logos please)

Trainers for outdoors

Black Pumps

Tracksuits may be worn when it is cold outside.

## **CODE OF CONDUCT AND DISCIPLINE**

Children are encouraged to treat themselves and others with respect and dignity.

A caring atmosphere, which reflects an attitude of calmness and understanding of the needs of others, is always encouraged.

Children are encouraged to see that the world is one they reside in both as an individual and member of a community and, as such, they have both rights and responsibilities.

We have a code of conduct, which outlines those rights and responsibilities and sets out our expectations of children in terms of their behaviour and manner around school. Close co-operation with parents is sought and parents are consulted on

matters of shared interest and concern. A copy of the behaviour policy is available on request.

### **PASTORAL CARE**

Every child at Wincle School is considered of the utmost value and we care greatly about all our children. Formal and informal open evenings allow parents to discuss the progress and development of their children.



### **TWINCLE PRE-SCHOOL**

This is our own pre-school facility, administered by a governor's sub-committee. Attendance at the pre-school helps ease the move into the main school.

Children are invited to school events, such as collective worship, sports day and the Christmas entertainment. The pre-school has recently been inspected by OFSTED and received a very good report. Twincle Pre School is a recognised provider. (Please ask for a separate prospectus).



### **PEOPLE IN SCHOOL**

Head Teacher:	Mrs. P. Worswick
Teachers:	Mrs J. Gilman (KS1) Mrs J. Spencer (KS2) Mrs. N. Nolan (KS2) Mrs. J. Gover (KS2) Voluntary Teacher – Mrs B. Jones (KS2)
Classroom Assistants	Mrs. J. Cogan (Junior Classroom) Mrs J. Candy (Infant Classroom) Mrs J. Whitehouse (Infant Classroom)
Administrative Assistant:	Mrs F. Bacon
Clerical Assistant	Mrs W. Fletcher
Cook and Midday Supervisor:	Mrs C Lomas / Mrs G. Hassell
Caretaker:	Mr G. Ives
Twincle Nursery Supervisor:	Mrs. B. Ashtiany
Nursery Assistants	Mrs J. Storey Mrs. N. Webb

### **Governors**

Chair of Governors	Mr I. Burns
--------------------	-------------

Foundation Governor	Revd. Mrs V. Breed
Foundation Governor	Mrs T. Stubbs
Foundation Governor	Mrs E. Seed
Foundation Governor	Mrs J. Marsh
Foundation Governor	Mrs C. Kay
Foundation Governor	Mrs R. Bamford
Local Authority	vacancy
Parent Representative:	Mr S. McMahon
	Mrs. A. Coombes
Associate governor	Mrs. B. Jones
Teacher Representative:	Mrs. J. Spencer
	Mrs. P. Worswick

The governors have responsibility for the effective management of the school, acting within the framework of national legislation. As well as full governing body meetings each term, there are sub-committee meetings dealing with curriculum, finance, premises and personnel.

### **FRIENDS OF WINCLE HOME SCHOOL ASSOCIATION**

Our parents are fully involved in the life of the school. The Friends are very active and organise both fund raising and social events. All parents are welcome to attend meetings and join in activities.

Chair person - Mrs S. Wood

Treasurer - Mrs. B, Manning Mrs. A Coombes

***And Finally .....***

**Wincle School is a family school with a uniquely friendly atmosphere. We look forward to welcoming your family to our school and to a long and happy association.**

The Prospectus is correct at the time of "going to press". The information may be subject to change either during the year or in subsequent years.

*Revised May 2010*